



MMO GAMING MOUSE

USER GUIDE



LICENSED
BILZARD
ENTERTAINMENT
PRODUCT



Thank you for choosing the World of Warcraft® MMO Gaming Mouse. This mouse has been jointly developed by Blizzard Entertainment, makers of World of Warcraft® and by SteelSeries, the leading manufacturer of innovative professional gaming gear, including headsets, keyboards, mice, mouse pads, and other accessories. This user guide is designed to familiarize you with all aspects of the mouse including setup and usage.

OVERVIEW (DEFAULT LAYOUT)

1. Left Click
2. Right Click
3. **Assist Target**
4. **Scroll Up** - Zoom in
Scroll Down - Zoom out
Press - Move & Steer
5. Open All Bags
6. World Map
7. Character



8. Windows Button 5
9. Windows Button 4
10. Autorun
11. Last Hostile
12. Attack Target
13. Nearest Enemy

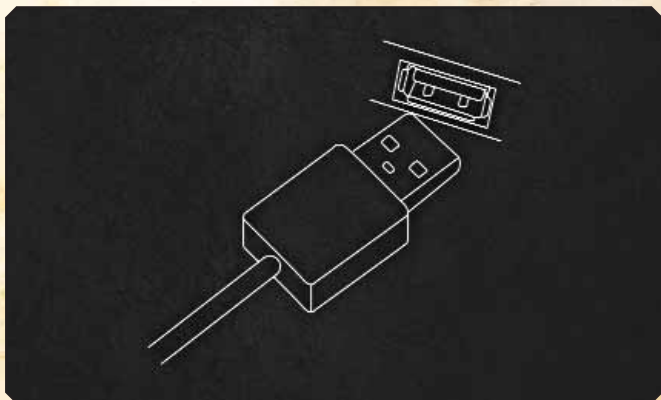


14. Battle Map
15. Target Self



CONNECTING YOUR MOUSE

Connect the USB cord to a USB port.



NOTE: The World of Warcraft® MMO Gaming Mouse can work in 250/500/1000Hz polling rate frequencies. This is configurable through the software and will be explained in the software section below. Some USB hubs might decrease the mouse polling frequency; if you experience decreased performance when using your mouse with a USB hub, plug your mouse directly into the USB port on your computer.

TECHNICAL SPECIFICATIONS

- Interface: USB 1.1 operating at full speed*
- Sensor Type: Laser
- Real-time Adjustable (via software) Resolution: 800/1200/1600/2000/2400/3200 DPI (Default: 800 DPI)
- Max. Speed: 65ips
- Frame Rate: 7200fps
- Max. Acceleration: 20g
- Min. Lift Distance: 2.5mm
- Adjustable Polling Rate (via software): 1000/500/250 Hz at 1/2/4 ms respectively (Default: 500 Hz / 2 ms response time)
- Data Path Format: 16-bit
- Sleep Mode: Disabled (the mouse is always on)
- Buttons: 15
- Cord: Braided, 2m (6.5 feet)

*Denotes operating rate of 12 Mbit/s (1.5 MB/s).

INSTALLING THE SOFTWARE

1. Download the software from our website:
<http://www.steelseries.com/downloads/>
2. Launch the installer and follow the instructions on the screen

SOFTWARE OVERVIEW



1. Menu Area
2. Profile Area
3. Character Information Area
4. Button Groups with current assignments
5. Button Assignments Panel *
6. Mouse Properties Panel *
7. Illumination Panel *
8. Restore Defaults button

*These panels are closed by default; press the panel tab to open.

PROFILE MANAGEMENT



The World of Warcraft® MMO Gaming Mouse allows up to 10 different profiles to be programmed with unique button assignments, DPI, sensitivity and illumination settings. All settings are profile-specific.

Every profile can be linked to a World of Warcraft® character of your choice. Simply click the Character Information Area:



Enter the character, character's realm name, and select the region where the realm is located in the new window:



Finally, press *OK* and your character information and avatar will be retrieved from the World of Warcraft® Armory server and the current profile will be associated with that character and named accordingly. If you encounter any errors, please ensure that the information is correct by testing it on www.wowarmory.com

The next step in profile customization is to set up colors and effects on the mouse. These can be accessed in the *Illumination* tab at the bottom - the Illumination Panel will have the following settings when opened:



You can pick any color using a drop-down palette:



The World of Warcraft® MMO Gaming Mouse supports up to 16 million colors.

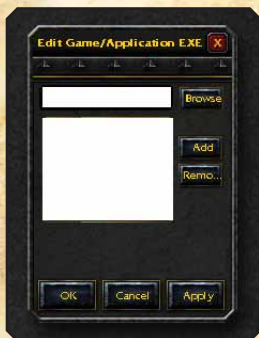
After selecting a color, choose the High, Medium or Low intensity level for how bright the colors will show on the mouse. Note that if you select *Off* - the lights on the mouse will turn off.

The Pulsation effects include High, Medium, Low or Off settings for how often the colors will pulse on the mouse - you can experiment with these to achieve the desired effect.

USING YOUR PROFILE

There are 3 ways to activate your profile:

1. Select it manually in the software by clicking the profile number on top of the main window or choose a profile from tray icon Profile menu.
2. Associate an executable file with the profile, so it will be loaded automatically when the EXE is launched. This can be done through the *File -> Edit Game/APP.* menu:



Simply browse or type in the desired EXE and press *Add* to add it to the list of associated EXE's. You can remove any EXE by pressing the *Remove* button.

Note: If there are several profiles using the same EXE, the first matching profile will be loaded when the game/application is launched.

3. Assign profile change to a mouse button using the Change Profile section from the Button Assignment panel:



This allows on-the-fly profile switching while you are in game. For example, you can switch between PVE and PVP profiles when entering the battlegrounds. Just assign different colors (i.e. green to PVP) to the 2 profiles so you have an indication as to which profile is currently active.

Note that you can assign either a specific profile to a button, or simply *Profile UP/DOWN* to go through profiles sequentially. Ensure that you assign *Profile UP/DOWN* in all relevant profiles so it works everywhere.

PROFILE SHARING

You can export your existing profile to an external file using *File -> Export Profile*, and send this file to a friend. In order to import a profile simply click *File -> Import Profile* and it will overwrite your current profile settings.

REMAPPING YOUR MOUSE

The World of Warcraft® MMO Gaming Mouse provides simple yet powerful remapping capabilities. You can remap every single button including the scroll wheel's Scroll Up/Down functions.

Simply click any button on the main screen and the Button Assignments panel will open allowing you to select any command for this button. You can either click on the desired command and it will be assigned to the selected button, or drag the command over to any other button to remap it.

Alternatively you can physically press any of the extended buttons on the mouse while the software is open and this button will be automatically highlighted and selected for edit on the screen.

There are 4 categories available in Buttons Assignments panel:

1. Game commands.



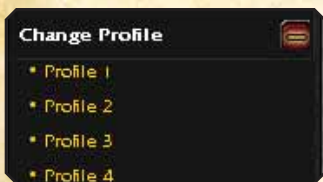
This category represents the “Key Bindings” menu found in World of Warcraft® allowing you to easily assign any in-game commands to the mouse buttons.

2. Change DPI.



Using this section you can assign on-the-fly DPI switch to any mouse button. Selecting a specific value will toggle that DPI setting when a button is pressed, or you can use a *DPI UP/DOWN* function, which will increase/decrease DPI to the next/previous listed value.

3. Change Profile.



Using the Change Profile function you can assign any mouse button to switch profiles. Similar to DPI you can either assign a specific profile or *Profile UP/DOWN* switch to load next/previous profile.

4. Custom Macros *



The Custom Macros section will contain all custom created macros for the current profile. These macros can be assigned to mouse buttons similar to Game Commands. Refer to the detailed description below on how to create your own macros.

When you have finished editing/re-mapping all buttons you can print the profile for future reference using *File - > Print menu*. This is a handy way to have your key bindings readily available for viewing without having to exit the game to Windows.

CREATING CUSTOM MACROS *

Creating custom macros has never been easier! Open the Button Assignments panel and expand the Custom Macros section. Press **New** to create a new macro - the macro creation window will open:



*Important Notice:

Users and owners of the World of Warcraft MMO Gaming Mouse are responsible for how they use the device within World of Warcraft. SteelSeries and Blizzard Entertainment do not condone or support any actions or inappropriate implementations with any of the features of this mouse or its software that violates the rules set forth by Blizzard Entertainment and the World of Warcraft Terms of Use Agreement, such as the prohibition against automating gameplay. For more information, please review the World of Warcraft Terms of Use at <http://www.worldofwarcraft.com/legal/termsofuse.html>

Type in the macro name, click in the macro input area and type in your macro. When done, press **OK** and the macro will appear in the Custom Macros list - drag it over to any key and it's ready for use.

Some advanced details available when creating a macro:

1. Timing control

You can switch between 3 different delay recording modes:

- **Text (Auto Delay)** - This option is selected by default and is designed to optimize the delays for proper in-game performance. If you are not sure what option to use - simply leave this option on.
- **Record Delay** - When selected, it will record the delays in real time reflecting your typing speed when creating a macro. This option is useful when you need precise real-life timing for some advanced macros.
- **No Delay** - Turns off all delays and simply injects the macro instantly. Note that while this option can be sometimes useful, World of Warcraft® and other games normally require some delays added in order for the game to process the macro as a human-like input. If there are no delays the game or application might not receive the macro or it may be injected partially, so use this advanced option with caution.

2. Looping

You can loop the macro by enabling the Loop check-box and specifying the number of repetitions.

Any time during the macro editing you can clear the macro window content by pressing the *Clear* button and start typing the macro from the beginning.

If you wish to remove any existing custom macros you can simply delete them by highlighting the macro and pressing the *Delete* button under the Custom Macros section.

Note that all custom macros are unique to the current profile and are not available in other profiles. This is done to avoid mixing up different macros that might be irrelevant in different profiles and preserve the order.

However, if you'd like to use existing macros in another profile you can export your current profile using *File -> Export* menu and import (*File -> Import*) it in the new profile. This will allow you to start editing the new profile based on the existing settings and with a full list of macros available.

MOUSE PROPERTIES AND GENERAL SETTINGS

Press the arrow on the Mouse Properties tab on the left side to open the panel. Here you can adjust the standard mouse settings:



- **DPI Value** - the following settings are available: 800/1200/1600/2000/2400/3200
- **Double-Click Speed**
- **Scroll Speed**
- **Win-Pointer Speed** - While this option is available among other standard Windows settings, it is recommended that DPI be used to control mouse responsiveness for better precision
- **Advanced Sensitivity** - Allows user to independently adjust X/Y - axis sensitivity

One general setting not included in the Mouse Properties panel is Polling Rate. It can be adjusted through the *Tools -> Polling Rate* menu and allows the user to set 250/500/1000 Hz at 1/2/4 ms respectively.

While all other settings are profile-specific, the Polling Rate is set globally and affects all 10 profiles.

Note that changing the Polling Rate fully resets the mouse and forces the operating system to switch to a different USB polling speed. This global change causes the mouse to “freeze” for a few seconds and lose all functionality - this is perfectly normal.

Finally, the Help menu includes the following items:

- **User Guide** - opens this user guide
- **About** - shows the mouse firmware and software information



This information is useful to check whether you are using the latest software version and may be requested when you contact SteelSeries customer support.

If you have any further questions - please refer to our website:
<http://www.steelseries.com>